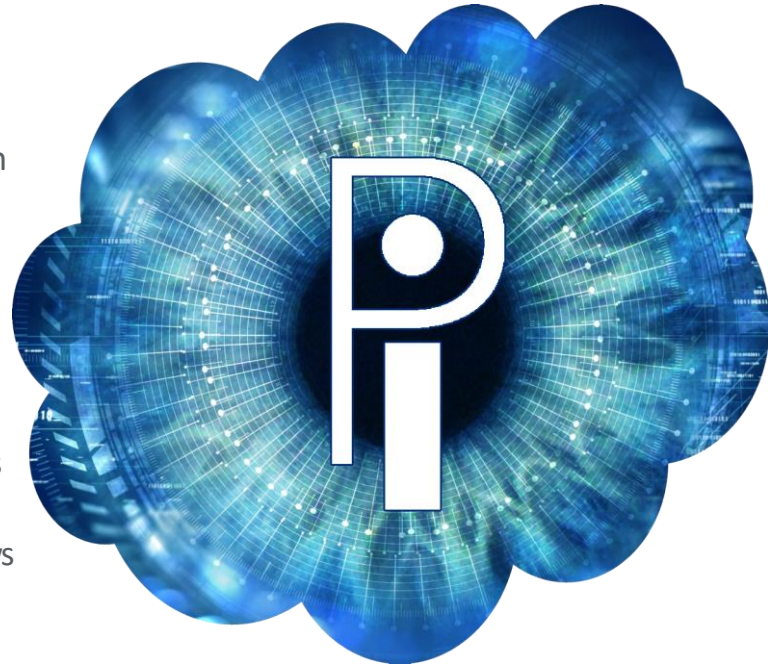


## Identity Server (IDS) Series

Scalable software platform for identity management through an intuitive, easy-to-use web interface and an open, secure REST API. The platform provides a set of core services that includes multimodal and multifactor biometric identification, including iris, face, temperature, and PINs.

The virtual IDS appliance is a virtual machine (VM) that includes all the software and hardware configuration in one convenient package. It eliminates the need for physical machines and allows you to host IDS in your organization's existing infrastructure.

The IDS Series manages PI's IOM Access200 and Access600 biometric devices.



## Virtual IDS

### *Technology that Powers Freedom*

- Easily configure and manage your devices from an intuitive web browser interface
- Industry leading biometric technology, using fast and accurate iris recognition
- Live monitoring of enrollments or biometric collection points
- Scalable for managing single site to enterprise solutions
- Out of box integrations with the leading physical access control systems (PACS)
- Integrated authentication
- Powerful API for easy integration with existing systems or custom applications
- End-to-end security: strong encryption for all communication and data
- User defined subject categories and alerts

# Specifications

| Capabilities & Features            | Virtual IDS   |
|------------------------------------|---|
| <b>Supported Modes</b>             |   |
| Identification                     | ✓   |
| Verification                       | ✓   |
| Enrollment                         | ✓   |
| <b>Supported Biometrics</b>        |   |
| Iris                               | ✓   |
| Face                               | ✓   |
| Fingerprint <sup>Ⓞ</sup>           | ✓   |
| <b>Credentials</b>                 |   |
| Biometric                          | ✓   |
| PIN                                | ✓   |
| Card ID                            | ✓   |
| <b>Performance</b>                 |   |
| People                             | Scalable to 300,000 people and beyond based on recommended virtual and networking environment |
| <b>Additional Features</b>         |   |
| Card Formats                       | Up to 64bit Facility Code and 64bit Card Number, PIV formats in dual-factor mode              |
| LDAP for Integrated Authentication | Microsoft Active Directory  |
| <b>Product Specifications</b>      |   |
| Browser Support                    | Google Chrome, Microsoft Edge (Excludes Edge Legacy)  |
| Integration API                    | REST  |
| Integration SDK                    | Java and .NET (C#)  |
| Network Security                   | TLS 1.2   |

ⓄAdditional hardware and license required.

Approved Patents: US10042994, US10025982, US10038691, US7542628, US7657127, US7574021, US7627147, US7751598, US8639058, US8682073

Pending Patents: 14/863950, 2016/0012218; 62/481,324; 62/598,178; 15/471,131; 14/863936; 2016/0014121; 14/863960; 2016/0012292; 15/514098; 2017/0251366

*Preliminary - All statements and claims are design goals, pending the result of testing*

Princeton Identity is the identity management company powered by biometrics, making security more convenient, accurate, and reliable than ever before. Using iris recognition and other technology, Princeton Identity enables businesses, global organizations, and borders to simplify identity management, resulting in improved safety and protection. Formerly a division within SRI International, Princeton Identity spun out as an independent venture in August 2016.



300 Horizon Dr. Suite 308  
Hamilton, NJ 08691  
609-270-3220